



How to Take a Basic Feng Shui Compass Reading

Avoid any Metal, Electrical and Electronic devices that can cause an incorrect compass reading. Especially underground pipes, and autos parked on street.

Notice our example house is Facing S (S2–Wu). Different examples shown.

1. Line Compass up with a line on the ground that is perpendicular to the House. You can also use a walkway, or any architectural feature like a protruding wall or corner.

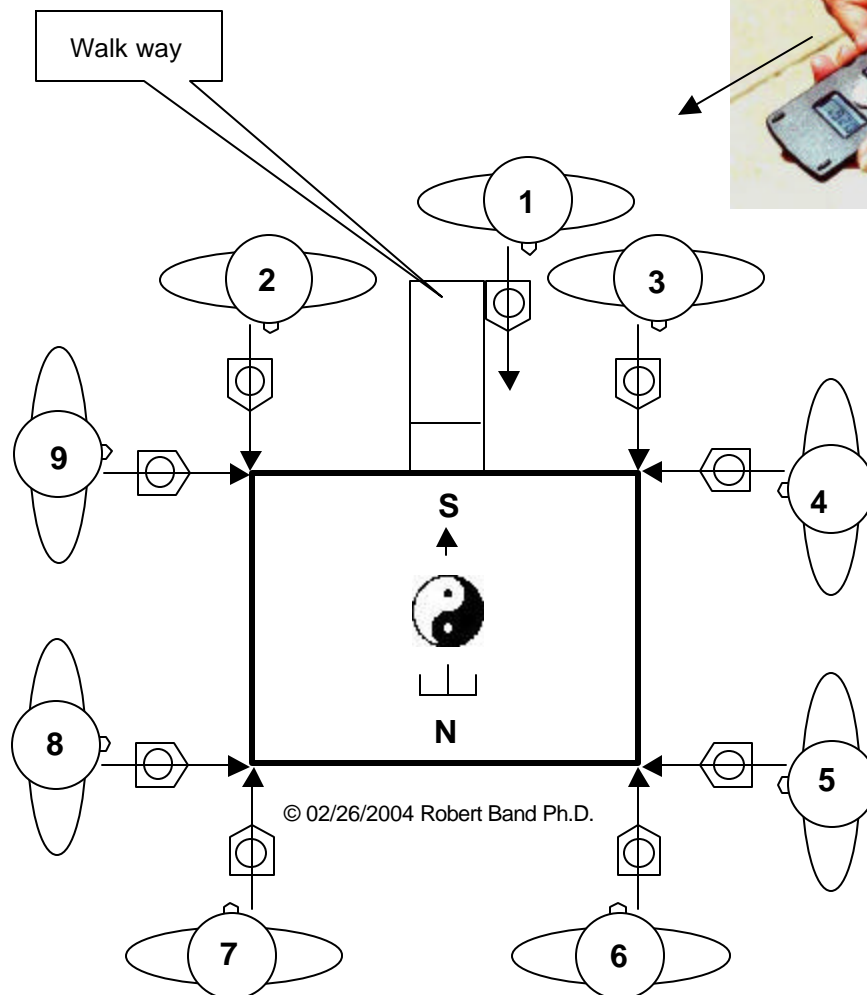
The photo shows compass is lined up parallel with a line found on the driveway.

2-3. Line Compass up with Edge of House. In this example you will need to add 180 to the basic compass reading.

4-5. You will need to add 90 degrees.

6-7. No reason to adjust reading.

8-9. Subtract 90 from compass reading.





Offices and Apartments

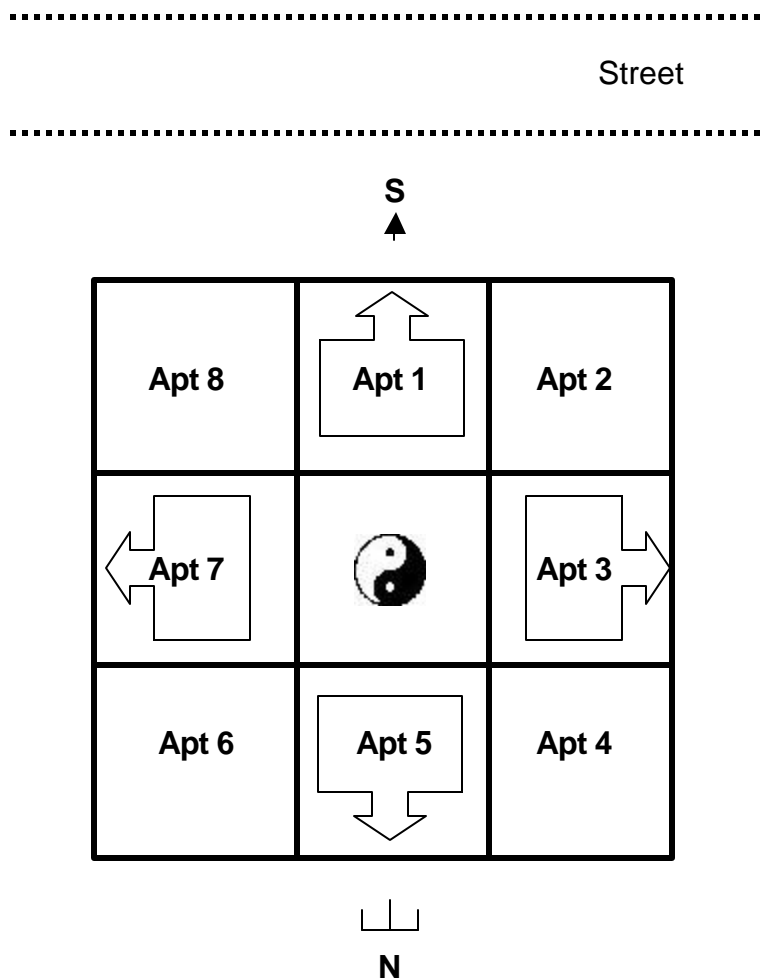
Offices and Apartments are much more challenging. Usually they are located on busy thoroughfares with lots of vehicles, and underground pipes and electrical lines to make taking a compass reading sometimes almost impossible.

Depending on your Feng Shui teacher, the rules regarding Sitting and Facing may be different. In the following example, the Building is Facing S (S2–Wu). However each unit has its own Sitting and Facing depending on what you have been taught.

In regards to Unit Facing, most teachers go with Yin – Yang concept. Unit Faces out in direction of windows. However, some teach Door direction is Facing.

Taking a reading is the same as before, but you will need to do some adding or subtracting to adjust for each unit.

We need see an accurate floor plan to determine the Sitting and Facing of the Corner units.



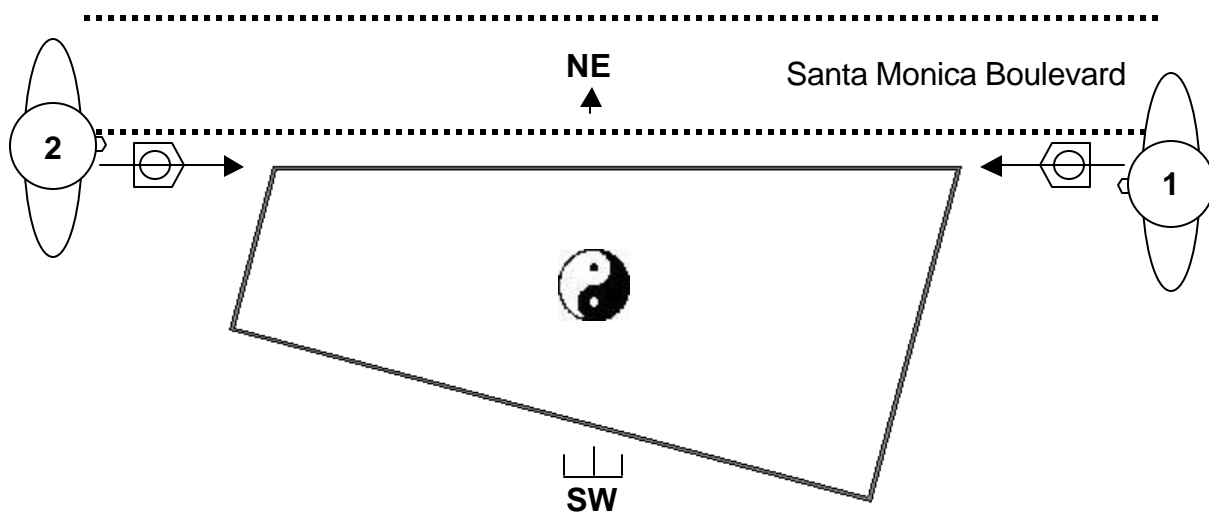


Challenging Examples the Real World of Feng Shui

This building that is actually a hotel and restaurant in Southern California.

Line Compass up with Edge of Building.

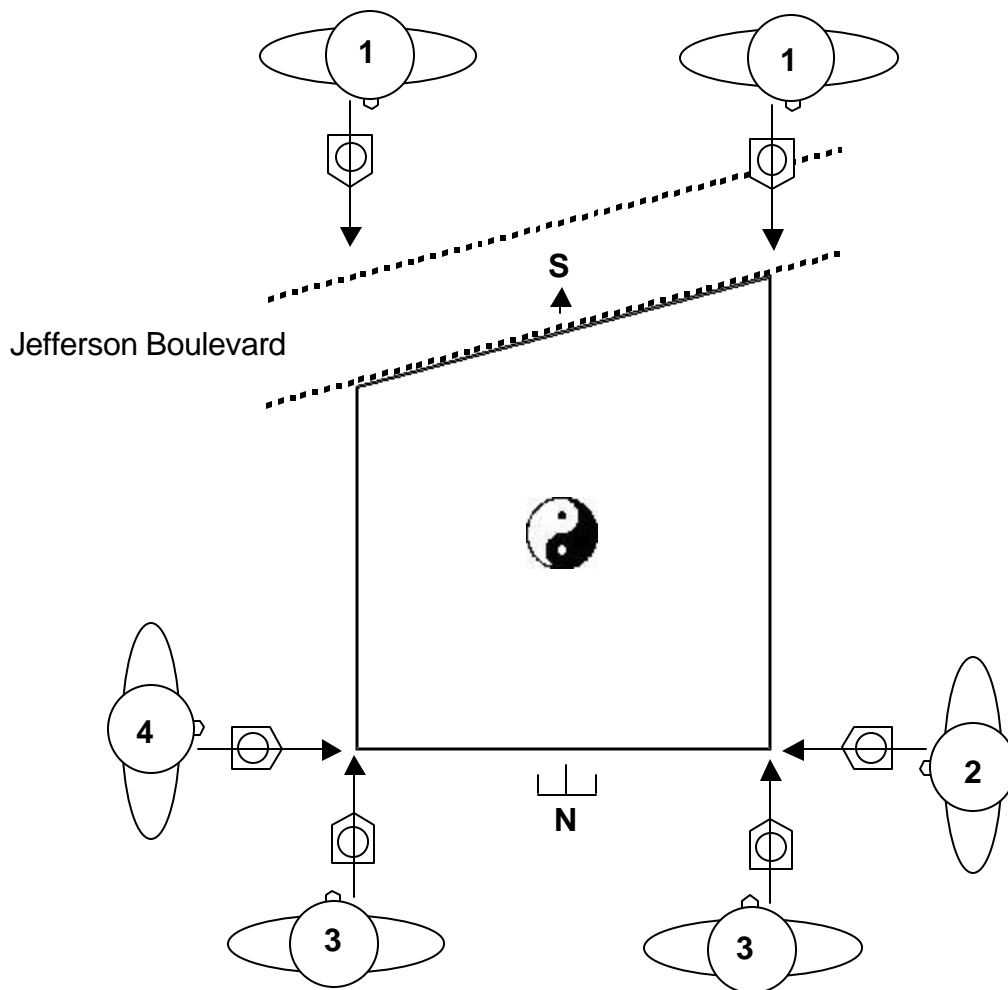
1. In this example you will need to add 90 to the basic compass reading.
2. Subtract 90 from compass reading.





Here is an office building located in Southern California that is similar to the preceding.

1. Line Compass up with Edge of Building. In this example you will need to add 180 to the basic compass reading.
2. You will need to add 90 degrees.
3. No reason to adjust reading.
4. Subtract 90 from compass reading.





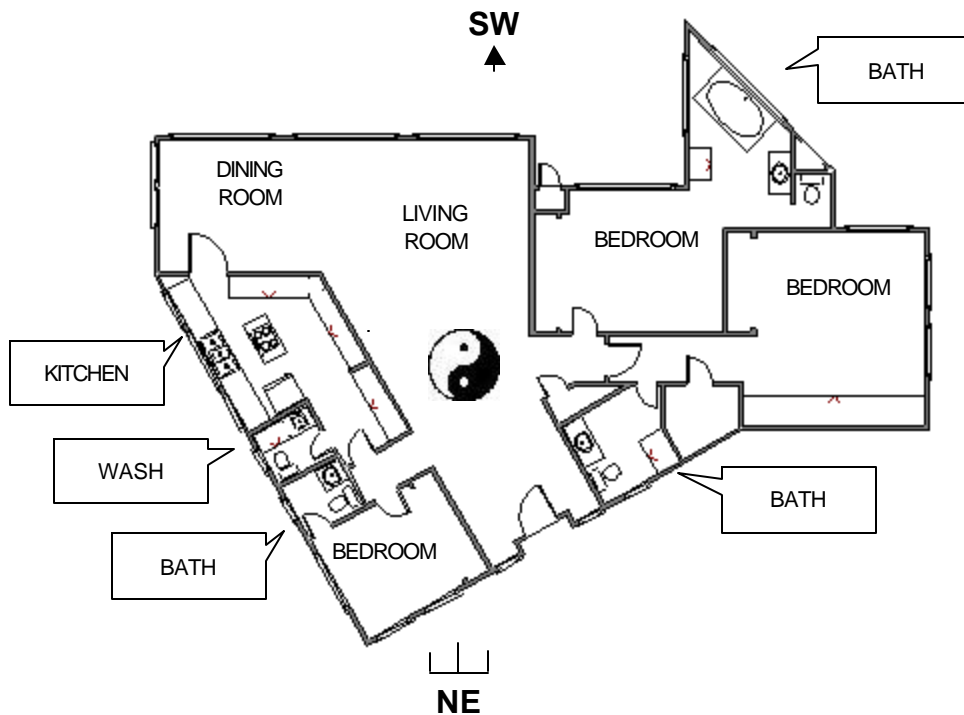
Closing thoughts.

Not all walls are perpendicular or at 90 degrees.

If your basic compass reading is plus or minus 5 degrees from the Center of a Mountain direction, no problem.

But when the compass needle says that you are on or close to a point that is between a Mountain or Trigram, then you will need to be very careful.

Beverly Hills Home





Beverly Hills Home

Odd shaped buildings can be more challenging. Basically line yourself up with any perpendicular wall and do the math.

Direction 1 – Add 180 degrees to your reading.

Direction 2 – Add 90 degrees to your reading.

Direction 3 – Facing direction, no need to correct.

Direction 4 – Subtract 90 degrees from reading.

